

# UD1272-BL, UD1272-WH

## USB LED MESSAGE DISPLAY

Item ref: 153.123UK, 153.124UK

User Manual



Caution: Please read this manual carefully before operating  
Damage caused by misuse is not covered by the warranty

### Package contents:

Please take care when unpacking this product. If any of the following are missing, please contact your retailer.

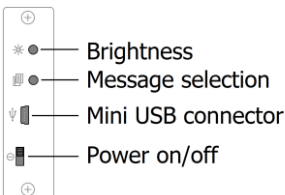
- UD1272 LED moving message display
- USB to mini USB cable (programming and power/recharging)
- Mini CD containing PC software editor

Note: Software is also downloadable from the following link...

[http://cdn.avslgroup.com/downloads/qtx\\_message\\_editor\\_v1\\_0.zip](http://cdn.avslgroup.com/downloads/qtx_message_editor_v1_0.zip)

Once unpacked, remove protective film from the LED screen and connect the USB lead to a computer (or a >500mA USB adaptor) for 4 hours to fully charge the internal battery. The message display may be operated directly from USB power or from the internal battery.

### Operation



Once charged, disconnect the USB connection to the computer.

Slide the Power switch to the on position.

Pressing the Brightness button cycles through 4 level settings.

Pressing the Message selection button cycles through the 8 internally stored messages or all 8 in sequence or current time.

## Software

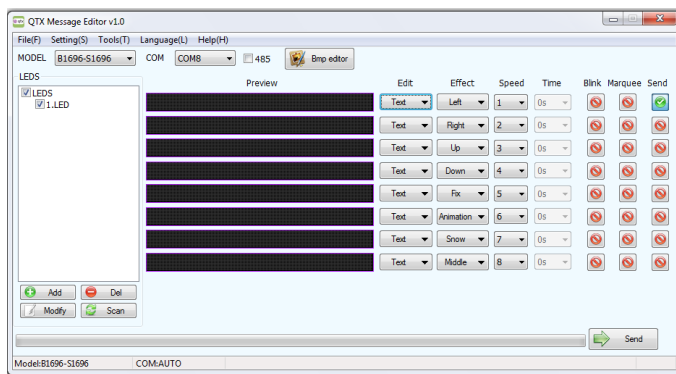
The included mini CD contains the driver and editing software for the LED message display, which can be run directly from the CD or saved to the PC and run directly from hard drive.

For PCs without a standard tray feed CDROM drive, the software can be downloaded from [http://cdn.avsigroup.com/downloads/qtx\\_message\\_editor\\_v1\\_0.zip](http://cdn.avsigroup.com/downloads/qtx_message_editor_v1_0.zip)

The software package contains a folder named "USB Driver". Double click the file inside this folder to install the USB driver onto your PC and follow the on-screen instructions before launching the editor. When first connecting the message display, do not opt to search "Windows Update".

The other folder within the software package is for the editor software. Inside this folder is an executable file (application) to launch the LED message display editor. Connect the LED display again via USB. The message display will show either a cup and battery screen saver or the last message selected. If not, check the USB connection.

Double click the editor file to run the application and a prompt will appear on the screen asking "Do you want this software to make changes to this computer" – select "Yes" to run the software. The following Main Editor window will appear...



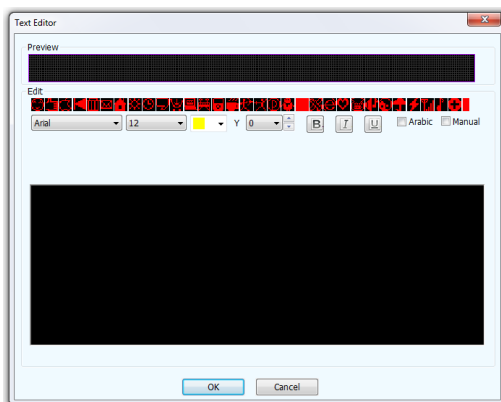
As above, the correct selection for MODEL is "B1696-S1696" for 154.123UK and 154.124UK. Ensure that this selection is made before editing any text for these message displays.

**Note:** The COM button will display "COMX", where "X" is the COM port number.

If there is no number displayed on this button, ensure that the message display is connected and the USB driver is correctly installed (try re-installing if necessary). Click on the COM button to see if more than one USB device is connected.

If so, it may be necessary to check which one is the LED message display by opening the computer's Device Manager, where the message display will appear in "Ports (COM & LPT)" (the "485" check box is for RS485 connection, which is not used in these models of display)

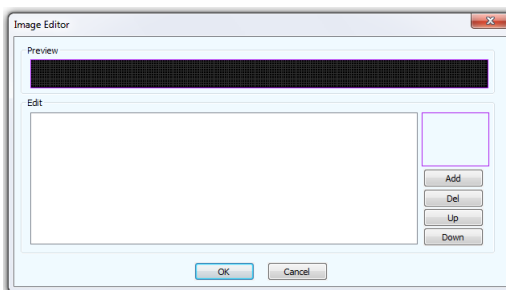
In the Main Editor window, double clicking any of the 8 Preview fields opens a text editor for the message as shown below.



Text can be entered into the lower section of the editor and formatted using the tools above. A representation of the text will be shown in the upper Preview field of the editor window. Clicking any of the symbols below the Preview field will add them into the text line. Up to 250 characters are possible per message.

Click "OK" when finished to return to the Main Editor window and repeat for all 8 messages.

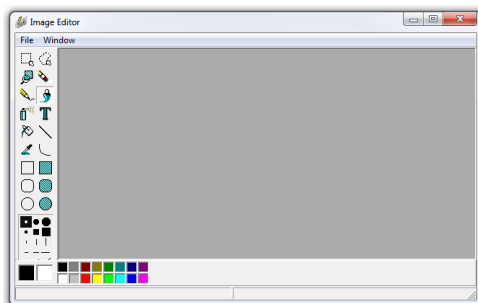
If preferred, an image may be adapted for the display by clicking on one of the "Edit" buttons. Select "Image" instead of "Text" to open the following window.



Clicking the "Add" button enables browsing for an image on your computer.

**Note:** the image must be small enough to fit into 12 x 72 pixels in order to be displayed. Several images can be Added or Deleted and navigated using the Up and Down buttons. Click "OK" when finished to return to the Main Editor window.

If custom graphics are required, there is a built-in BMP editor available from the Main Editor. Clicking this button will open a prompt asking if it is safe to run the software. Select "Run" to open the following window with tools for designing a custom image.



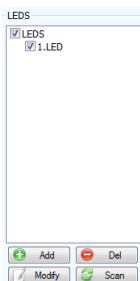
Following the drop down "File" menu, it is possible to create a new bitmap image and save to disk, which may be browsed to and selected within the image editor as described above. Once all messages are programmed, return to the Main Editor window to set the display types.



To the right of the Edit buttons are Effect and Speed buttons. Clicking these buttons offers a choice of 8 transition effects with 8 speed settings. The Time button is not used for the UD1272 message displays.

On the far right are 3 buttons for Blink and Marquee effects and a Send button when ready. If Blink (flash) or Marquee (border) effects are selected (green tick), this effect will be active. If the Send button is selected (green tick), this message will be armed ready to send.

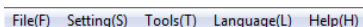
To send messages to the display, click the Main Send button (green arrow) at the bottom right of the window and any messaged with the Send button ticked will be transmitted. During transmission, the display will change to show that data is being received. If required, it is possible to set up several separate message displays using the LEDS section to the left of the Main Editor window.



At the bottom of the LEDES section are 3 buttons to Add, Modify or Delete the LED display IDs. Click Add to set up a new display which will have a number ID (selectable up to 256) and can be given a name. Clicking Modify allows these ID settings to be changed as required. Selecting an LED ID and clicking Delete will remove it from the list. (the Scan button is not used for this model of LED display)

Setting up different LED display units this way enables saving different message sets for each display unit, which can be sent as a group from the Tools menu.

At the top of the Main Editor are the main menu options - File, Setting, Tools, Language, Help.



- File - allows storage of message sets to the computer's hard disk.  
Select "Load" to load up a previously stored message set from the hard disk  
Select "New" to start a new message set from default settings  
Select "Save" to save the current message set to the hard disk
- Setting - allows modification of the LED display's ID settings
- Tools - allows individual or group sending of message sets and time synchronization  
The Send function sends to an individual message display  
The Group Send will send message information to multiple displays  
The Synchronize Time function sets the message display's time from the computer
- Language - allows the user to set the default language for the software interface
- Help - shows details about the software

## Specifications

Stock code	153.123UK	153.124UK
LED colour	Blue	White
Power supply	Internal Li-ion battery or USB	
Battery life	5-10 hours (from fully charged)	
Memories	8 user editable (250 characters each)	
Display	12 x 72 pixels	
Controls	On/off, Message, Brightness	
Connection	Mini USB (power and data)	
Dimensions	320 x 85 x 30mm	
Weight	317g	



**Disposal:** The "Crossed Wheelie Bin" symbol on the product means that the product is classed as Electrical or Electronic equipment and should not be disposed with other household or commercial waste at the end of its useful life. The goods must be disposed of according to your local council guidelines.

*Errors and omissions excepted.  
Copyright© 2015. AVSL Group Ltd.*