

RGBW WiFi Controller with Wall Plate

153.896UK User Manual



Lyyt RGBW smart controller with touch RF wall plate is compatible with voice control via Amazon Alexa and Google Assistant. Simply download the Tuya application to control LED tape remotely from your phone, the app features 8 pre-set lighting effect modes, sound to light technology, colour scroll and a timer function. Complete with the WiFi controller is a sleek glass touch wall plate controller which has another 9 pre-set lighting effect modes, speed and dimming control and an individual white LED control button. This controller can be used with either 12V-24V RGBW or RGB LED tape/COB strip.

Product Features

- WiFi controller powered by Tuya
- Voice control via Amazon Alexa and Google Assistant
- Pre-set lighting effect modes
- Sound-to-light technology
- Speed and dimming control
- Timer function
- Recommended for use with 1 x 5m reel of Lyyt 12V RGB LED Tape 156.720UK or 2 x 5m reels max. of Lyyt 24V COB Strip 156.667UK, or 2 x 5m reels max. Lyyt 24V RGBW LED Tape 156.667UK, or 2 x reels max. Lyyt 24V RGB LED Tape 156.770UK
- Pair multiple receivers to the same remote control to achieve wireless synchronization effect. Receivers must be within 10m of remote control.

Specification

Controller

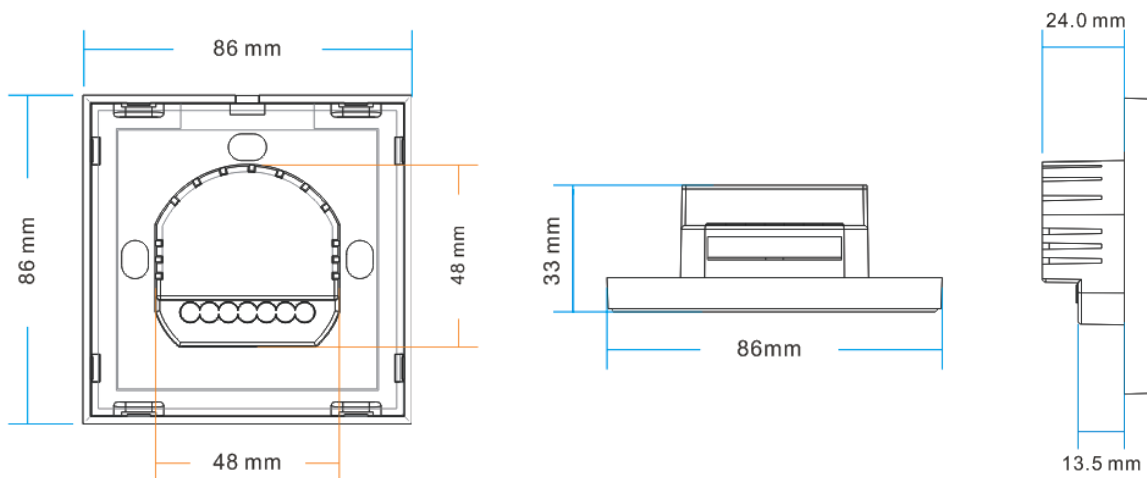
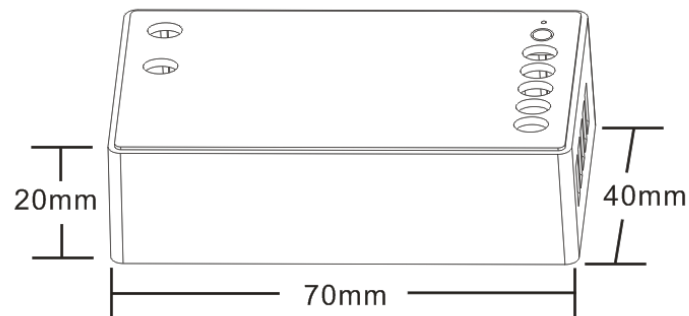
Working temperature	-20-60°C	Supply voltage	DC12V-24V
Static power consumption	<1W	Connecting mode	Common anode
Grayscale	1024 levels	Speed stage	100 levels
External dimension	L70*W40*H20 mm	Packing size	L95*W47*H33mm
Net weight	65g	Gross weight	80g
RF frequency	2.4GHz	RF distance	≤20m
Short circuit protection	Yes	Memory function	Yes
Output	4 channels	Output current	≤4A(each channel)
PWM frequency	1.95KHz	Max. Output power	12V:<192W, 24V:<384W

Remote control

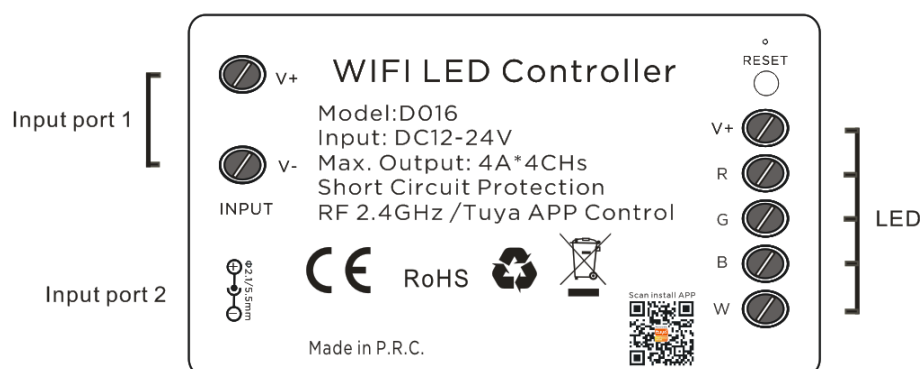
Ambient temperature	0-45°C	Working voltage	AC90-265V(50/60Hz)
Standby power	0.2W	Working power	2W
Net weight	130g	RF frequency	433.92MHz
Dimension	86*86*34mm	RF distance	≤20m
Structure	86-type European standard		

External Dimension

Dimensions




Interface Specifications



Directions for use

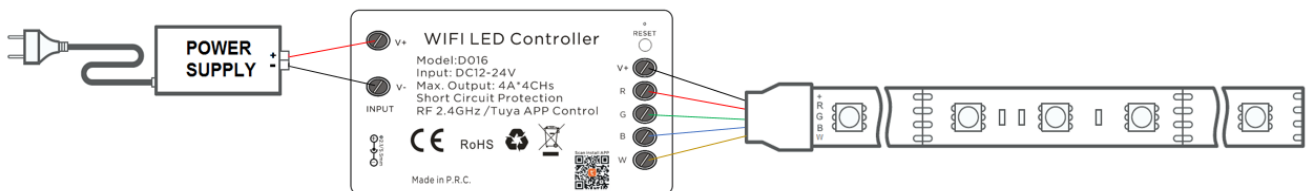
1) **WIFI controlled by Tuya Application to achieve smart control, such as group control, scene control, timer control, music control and so on.**

Scan QR code from controller to download Tuya application: 

Long press "Reset" button on controller and hold for 5 seconds until the loading LEDs flash to start the connection with Tuya APP. Please read operation instruction of App, or following the pop-up prompt message with the APP, to finish the rest connection operation.

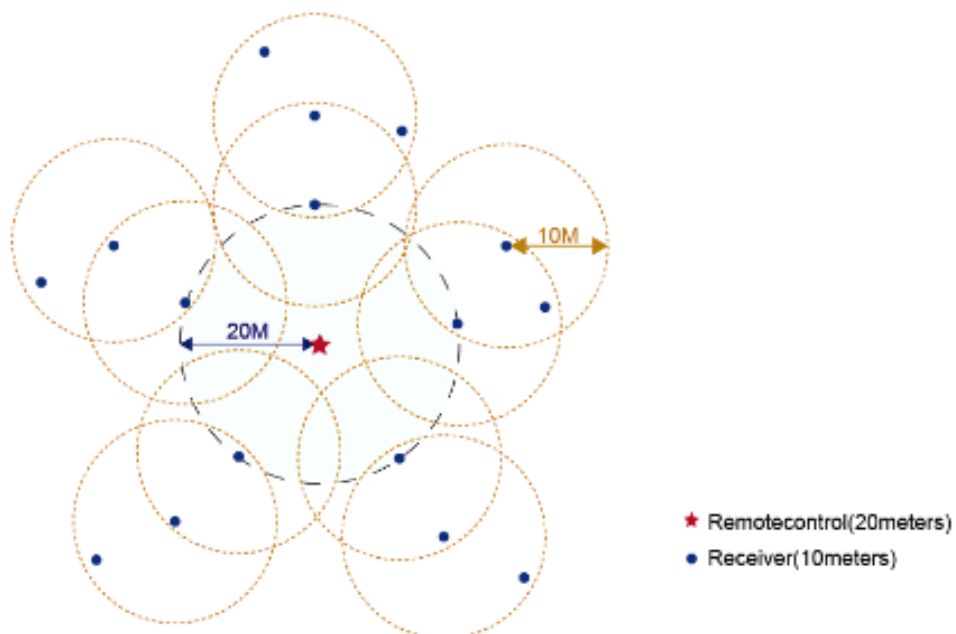
Please pair the WIFI controller to remote control before using.

Typical Applications



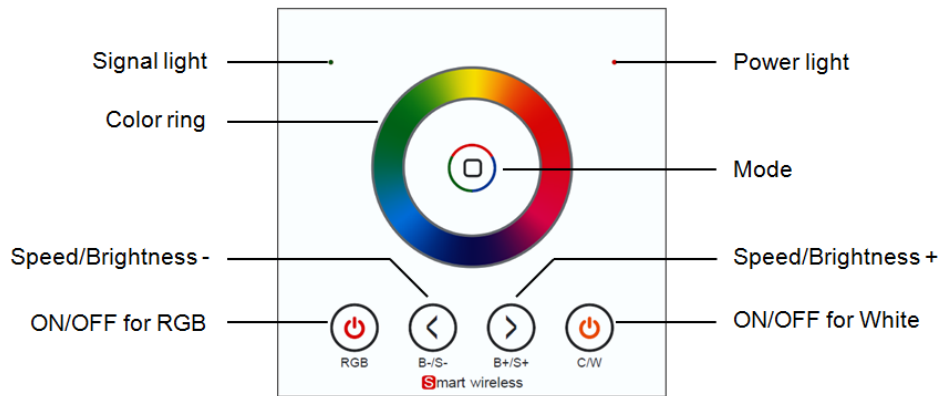
Wireless-synchronization function under remote controlled type

Receivers will transmit the control signals from the remote control and self-inspection the work statuses for each other, so multiple receivers can wireless-sync-work completely when be paired to the same one remote control, not only static mode but also dynamic mode, to achieve wired-like operation experience.



In order to achieve perfect wireless synchronization effect, please keep the distance between receivers within 10 meters as above show.

Wall plate remote control functions:

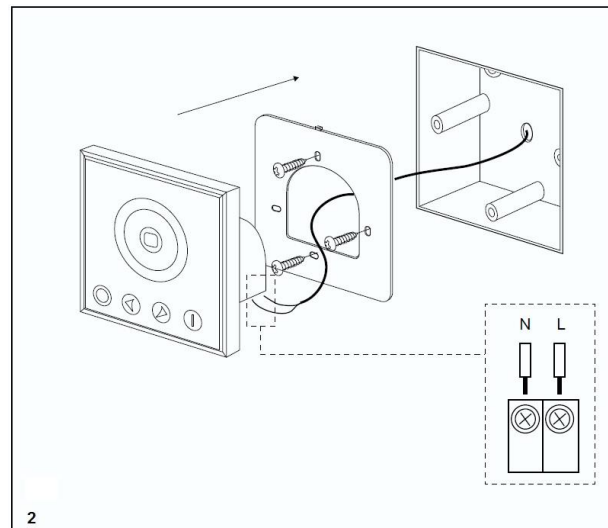
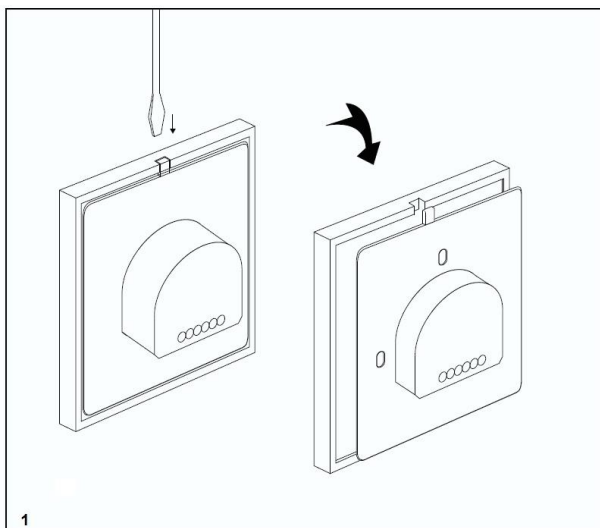


Name of key	Instruction	Remarks
RGB	ON/OFF key for RGB channels	
C/W	ON/OFF key for CW/WW channels	
Mode	The mode will go to next, when you touch the key each time	9 modes in total.
Speed/Brightness +	The Speed/Brightness will +1, when touch the key each time	Speed for dynamic modes, Brightness for static modes.
Speed/Brightness -	The Speed/Brightness will -1, when touch the key each time	
Color Ring	For RGB channels static color selection	

9 modes in total as below:

No	Patterns	No	Patterns
1	Static white	6	Seven-color gradient changing
2	White breath	7	R/G cross fade
3	Three-color jump changing	8	R/B cross fade
4	Seven-color jump changing	9	G/B cross fade
5	Three-color gradient changing		

Wall-panel Installation instruction



RF CODE

(1) **Code pairing operation means that the receiver will only be controlled by the value code remote controller.**

Step	Operation	Instructions
1	Connecting the load to the receiver and power on it.	1.It is necessary to clear the code first, if the receiver was coded before. 2.Batch operation can be performed within the remote control range.
2	Press and hold "C/W" on the remote control for 5 seconds, the indicator of the remote control will flash quickly, means it enters the pairing code transmission status.	Will automatically exit code transmission status after 60 seconds, or pressing any key to exit.
3	See the load light flashes 3 times and return to the initial state	Pairing coding is finished successfully

(2) **Code clearing operation: means that the original code value of the receiver will be cleared and returned to the factory state. Then it can be controlled by any compatible remote controller and can learn to a new code.**

Step	Operation	Instructions
1	Connecting the load to the receiver and power on it.	1. The clearing operation should be finished within 1 minute after the receiver is powered on. If exceeds the time, can be powered on again. 2. Batch operation can be performed within the remote control range.
2	Press and hold the remote control "RGB" for 5 seconds. The indicator of the remote control flashes quickly, means it enters the clearing code transmission status. There is no need to select the corresponding area when clearing code.	1. Will automatically exit code transmission status after 60 seconds, or pressing any key to exit. 2. If the original remote controller is lost, the new remote controller can be used for clearing operations.
3	See the load light flashes 3 times and return to the initial state	Clearing coding is finished successfully

(3) Code learning operation between remote controls: Used to unify system code values or copy a new remote controls.

Since each remote controller has its own unique code at the time of delivery, when there are multiple remote controllers in one system, one of them (for example, remote controller A) must be selected as the system code value, and the code value of the rest remote controllers (for example, remote controller B) should be copied to the same one.

Step	Operation	Instructions
1	A remote control: Press and hold "C/W" on the remote control for 5 seconds, the indicator of the remote control will flash quickly, means it enters the pairing code transmission status.	Will automatically exit code transmission status after 60 seconds, or pressing any key to exit.
2	B remote control: long press "mode key" for 5 seconds, the remote indicator light changes from 100% light to off light and flash, means entering the code value receiving state	Will automatically exit the code value receiving state after 30 seconds, or exit after learning the code value successfully.
3	see the B remote control indicator light flash 3 times	Code copying is finished and exit code value receiving status.

(4) The remote controller restores the factory setting: it means that the remote controller will be restored to the factory's unique code value.

Step	Operation	Instructions
1	Long press "mode " for 20 seconds	The remote indicator light down to off and then back to 100% light. Means this step is finished
2	Press the "RGB" to confirm, the remote indicator light flashes 3 times	Restore factory settings successfully.



This product is classed as Electrical or Electronic equipment and should not be disposed with other household or commercial waste at the end of its useful life. The goods must be disposed of according to your local council guidelines.

Errors and omissions excepted.

Copyright© 2023 AVSL Group Ltd, Unit 2 Bridgewater Park,
Taylor Road, Trafford Park, Manchester. M41 7JQ.

AVSL (Europe) Ltd, Unit 3D North Point House,
North Point Bus. Park, New Mallow Road, Cork, Ireland.